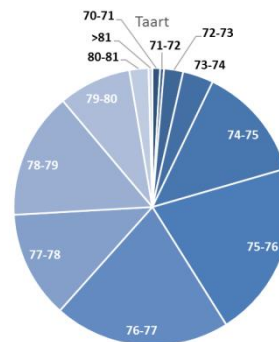
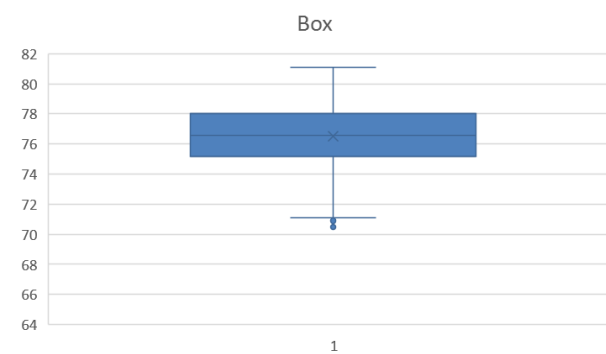
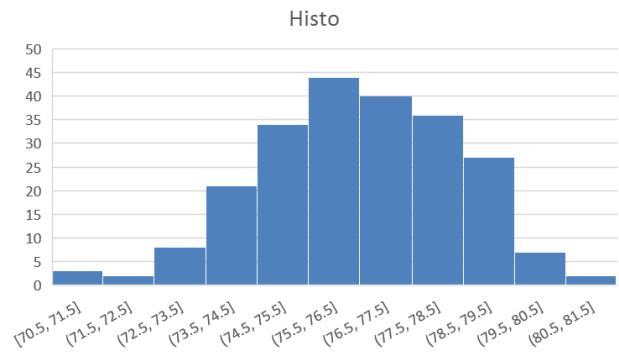
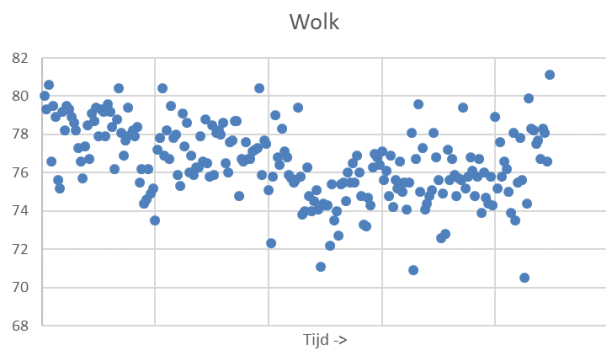


Resultaat gemeten L_{Amax} niveaus op meetpost Pastoor Canniuslaan, Bergschenhoek

Type vliegtuig: Boeing B737-800
 Periode: vliegjaar 2020 (1-11-2019 - 31-10-2020)
 Vertrek: Baan 06
 Locatie: NMT6 (94343, 444573)

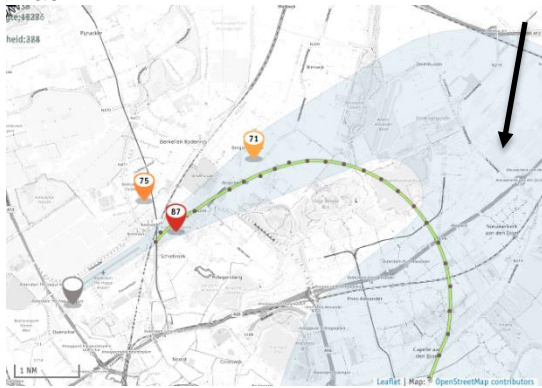


Aantal noise events: 224
 Logaritmisch gemiddelde L_{Amax}: **76.9** dB(A)
 Minimum L_{Amax}: 70.5 dB(A)
 Maximum L_{Amax}: 81.1 dB(A)
 Standaard deviatie: 1.9



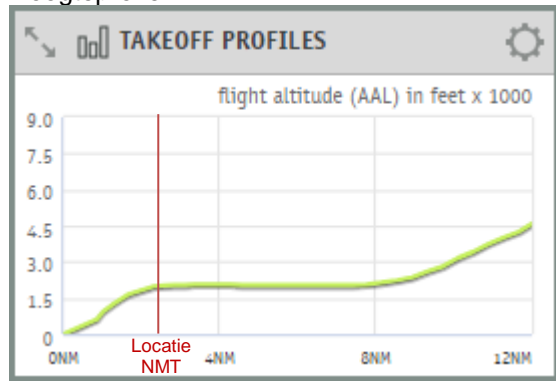
Vlucht met minimum LAmx: TRA91A, PHHXJ naar LPFR (Faro, Portugal) op 27-9-2020 07:59

Track



Meteo: wind 010 degrees 7 m/s

Hoogteprofiel



Vlucht met maximum LAmx: TRA68R, PHHZD naar LPFR (Faro, Portugal) op 20-10-2020 07:05

Track



Meteo: wind 150 degrees 6m/s

Hoogteprofiel

